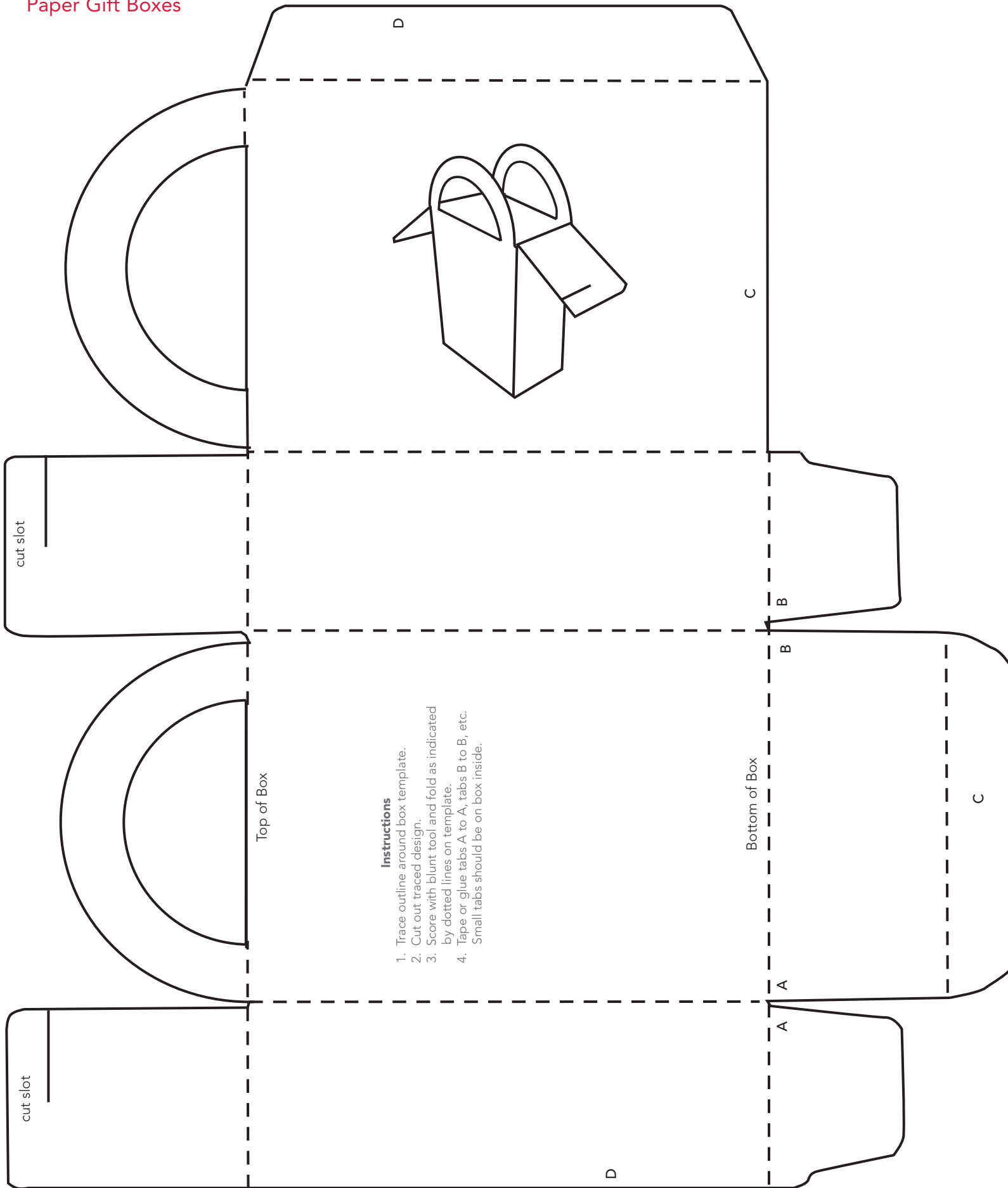
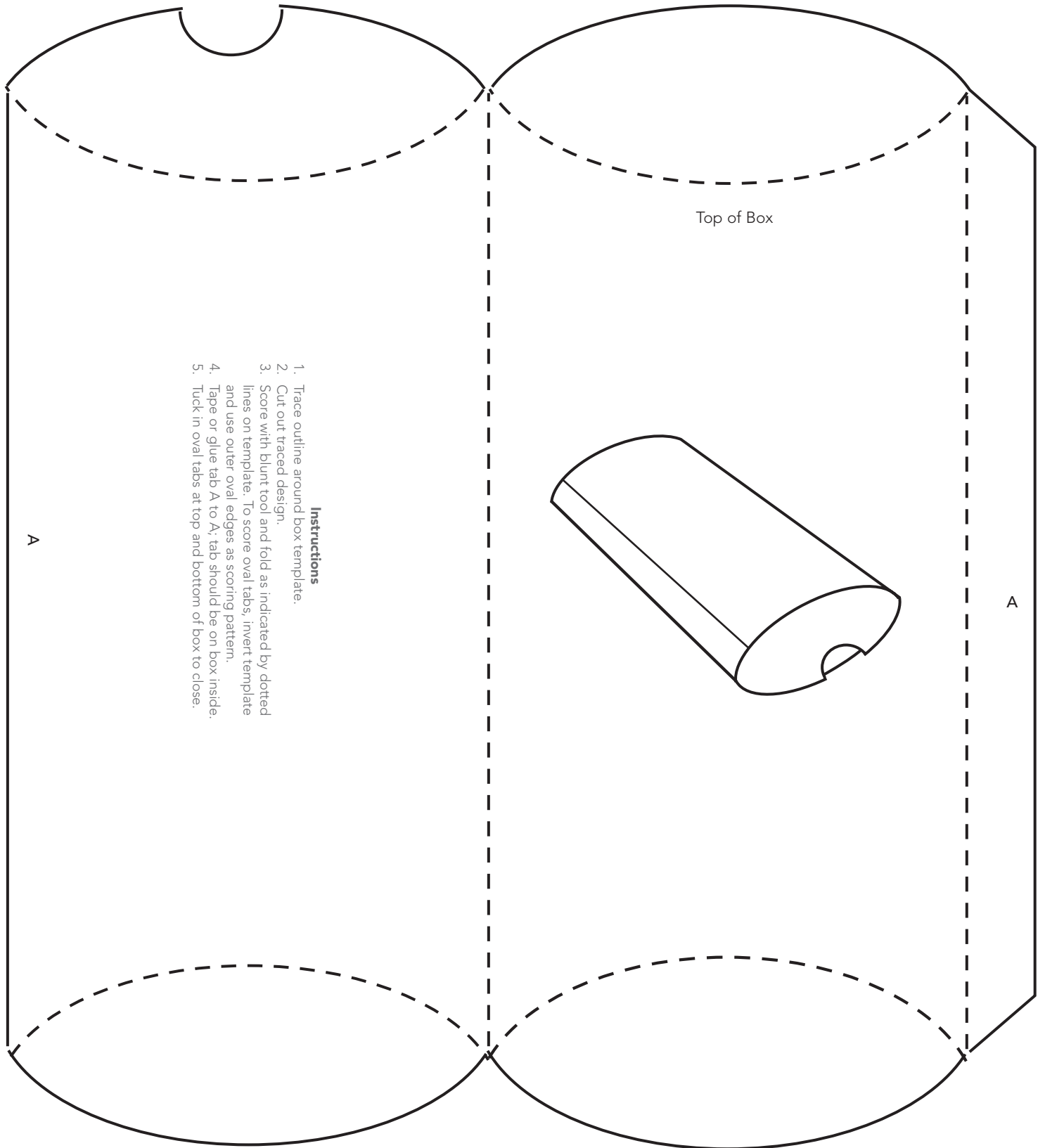


# Paper Gift Boxes



# Paper Gift Boxes



### Instructions

1. Trace outline around box template.
2. Cut out traced design.
3. Score with blunt tool and fold as indicated by dotted lines on template. To score oval tabs, invert template and use outer oval edges as scoring pattern.
4. Tape or glue tab A to A; tab should be on box inside.
5. Tuck in oval tabs at top and bottom of box to close.